

FORM No. 1.

*N.B. A survey made to the Land office for John Rice is not correct. The Surveyor General is requested to except of this as the proper Return.*

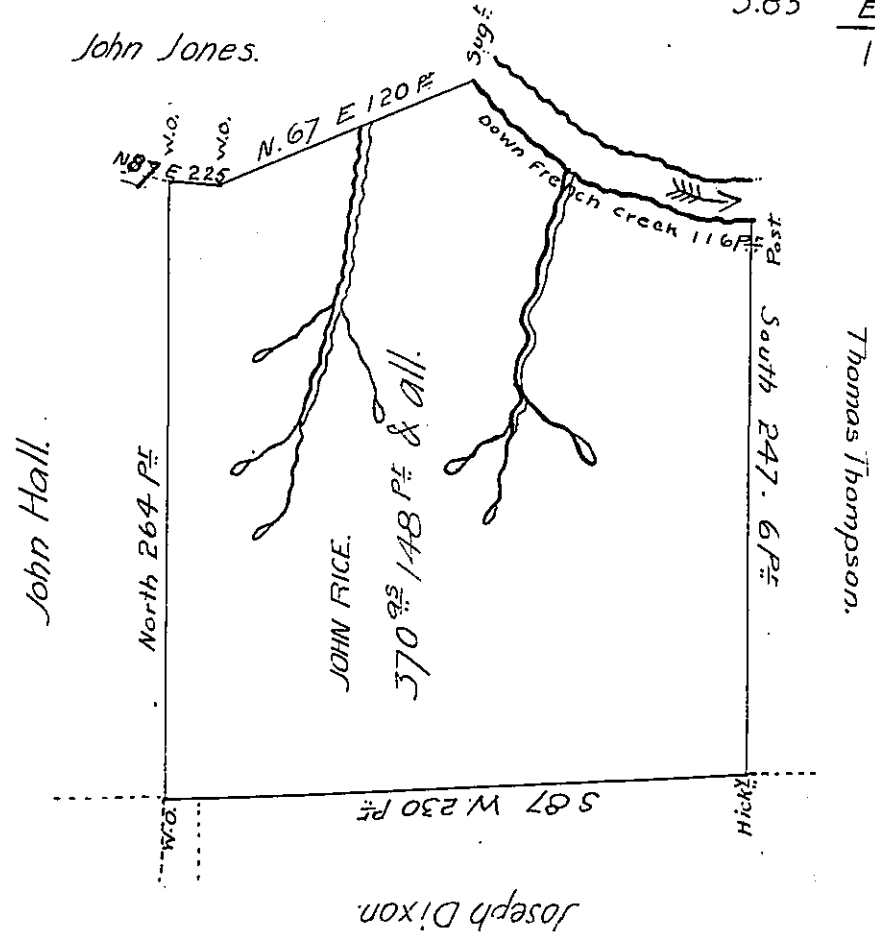
*Wm. Power D.S.*

*River Courses.*

*S. 34 1/2 E 28 P#*  
*S. 54 1/2 E 26*  
*S. 69 E 17*  
*S 73 1/4 E 11.5*  
*S. 79 3/4 E 22.5*  
*S. 85 E 11.*  


---

*116.0*



*Situate on the west side of French Creek In Allegheny County. Containing 370 25/100 148 P# and allowance of six p# Cent for Roads &c. Surveyed the 15<sup>th</sup> day of May 1795. In pursuance of his Improvement Bearing date the 1<sup>st</sup> day of April 1795*

*W<sup>m</sup> Power D.S<sup>r</sup>*

*To Don<sup>l</sup> Brodhead. Esq.*

*Surveyor General.*

*IN TESTIMONY that the above is a copy of the original remaining on file in the Department of Internal Affairs of Pennsylvania, made conformably to an Act of Assembly approved the 16th day of February, 1833, I have hereunto set my Hand and caused the Seal of said Department to be affixed at Harrisburg, this fourteenth day of August 1906.*

*Isaac R. Power*  
 Secretary of Internal Affairs.